

++p

DRIVEN BY DESIGN

SINGAPORE \$ MALAYSIA RM18 HONGKONG HKD00 AUSTRALIA AU\$14.95 OTHERS US\$12

A PUBLICATION OF KEY EDITIONS PTE LTD

MICA(P) No.181/07/2013 PPS 1457/09/2012 (022852)

d+a®

design and architecture
www.designandarchitecture.com

2014/2015 | SS8



DRIVEN BY

DESIGN



design team Jasper Chia, Teo Ken-ian, Richard Villanovs,
Spencer Chan, Ngu Ping Hu, Paulo Dino

consultants Nemours Garden Design Pte Ltd

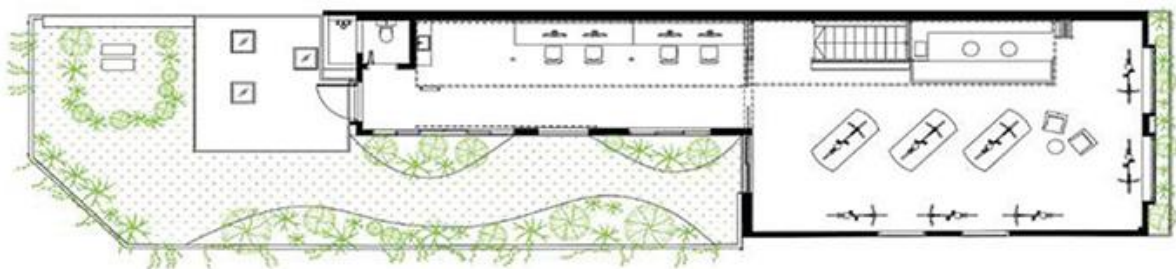
builder Deep Blue Group Pte Ltd

site area 1,650sqm

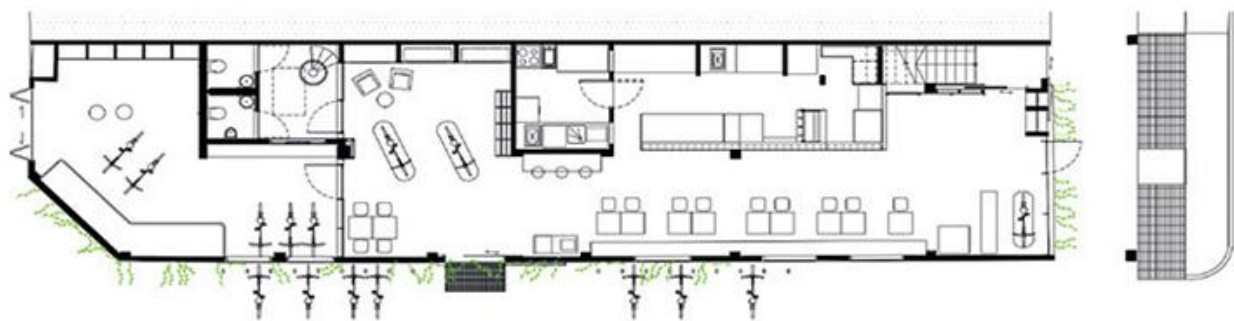
gfa 2,700sqm

completion 2014





2ND STOREY FLOOR PLAN



GROUND FLOOR PLAN



Part bike shop, part cafe, Coast & Company is home to a collaboration between local bicycle brand Coast Cycles, and independent coffee boutique Papa Palheta. Located in the residential suburb of Siglap, FUUR was tasked with bringing life to this intersection of subcultures, with the hope of it evolving into a hub of communal activity within the neighbourhood. As this is to be not just a bike shop for enthusiasts but also a cafe hangout for the uninitiated, the design seamlessly incorporates the bike retail areas, repair workshop, gallery, and the cafe in the multi-programme space. To create a democratic atmosphere, FUUR employed the concept of a cafe surrounded by biking activity, and situated the cafe foremost on the first floor.

Approaching from the main entrance, one is faced with the cafe, simple and casual with a low counter, with the repair workshop and delivery lounge in the background. Large arched windows line the left wall, providing a view of the lane beside the shop where customers are encouraged to test ride the bikes. The space also features a first-floor side door for easy access to the workshop from the side lane, and a gallery-like showroom on the upper floor with its own garden, aimed at creating the perception of a ground floor space. Finally, the aesthetic of the entire shophouse is raw and minimalist, with a spattering of greenery. This was in line with the brand identity, while creating a muted backdrop for the bikes to take centre stage.